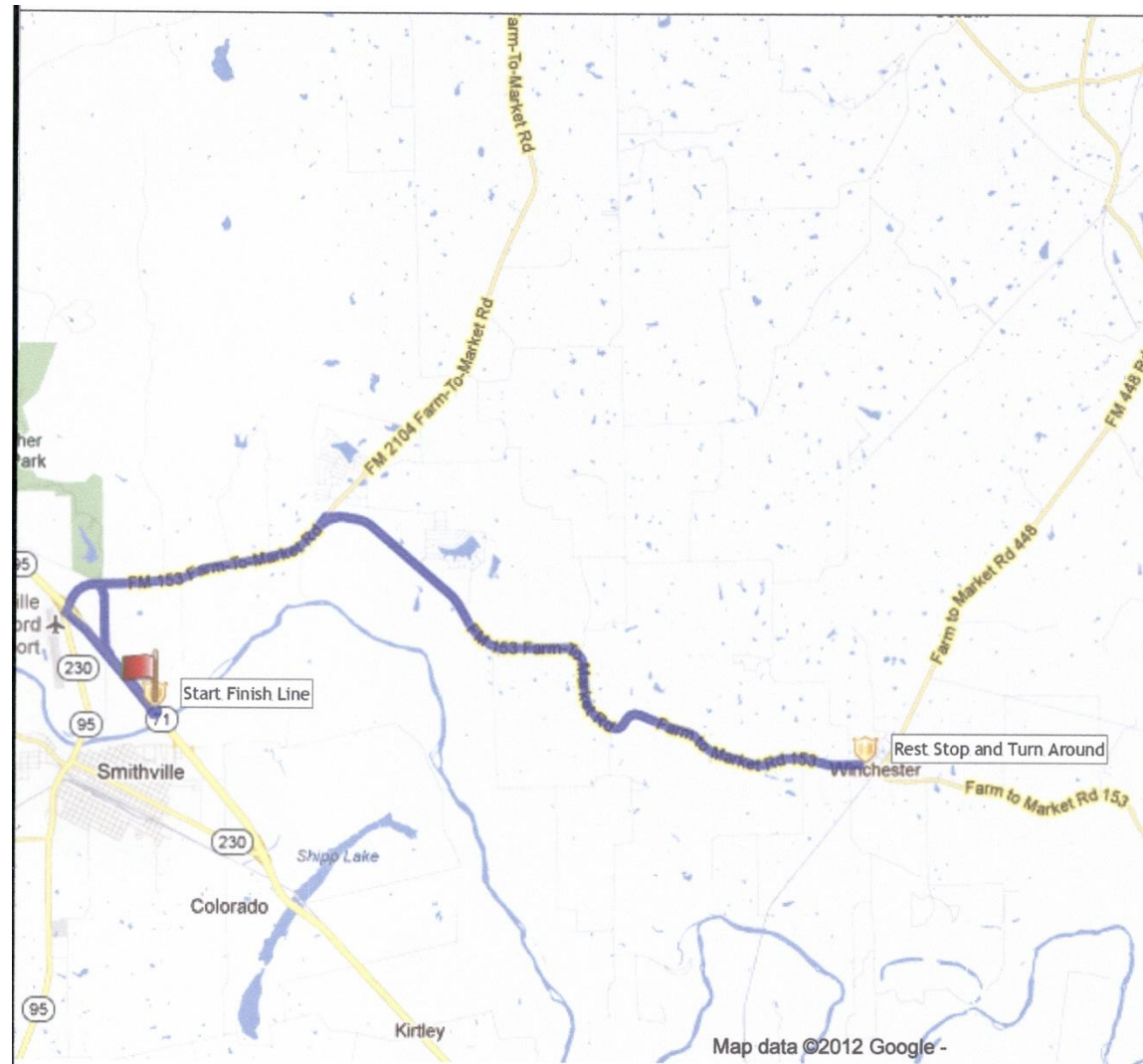


Pedal Thru The Pines 24 Mile Route



- Head West on TX-71
- Turn right onto 2-Mile Lane at .8 miles
- Turn right onto FM 153 at 1.5 miles
- Turn right to stay on FM 153 at 4.2 miles
- Rest Stop in Winchester at 11.6 miles
- Turn around and go back on FM 153
- Turn left at stop sign onto FM 153 at 19 miles
- Turn left onto Hwy 71 East ramp at 22.3 miles
- Turn right to finish line at 23.7 miles